



MODEL	VIDIFOX i3010	VIDIFOX i3030	VIDIFOX i3130	VIDIFOX i3380
Sensor	1/3"CMOS	1/3"CMOS	1/3"CMOS	1/3"CMOS
Total pixel	2 Megapixel	2 Megapixel	2 Megapixel	3 Megapixel
Zoom	9x optical, 12x digital	9x optical, 12x digital	9x optical, 12x digital	9x optical, 12x digital
Frame rate	20(max)	20(max)	20(max)	25(max)
Shooting area	Max: 13.5"x10.6" Min: 0.1"x0.1"	Max: 13.5"x10.6" Min: 0.1"x0.1"	Max: 13.5"x10.6" Min: 0.1"x0.1"	Max: 13.5"x10.6" Min: 0.1"x0.1"
Focus	Auto/manual	Auto/manual	Auto/manual	Auto/manual
Native output signal	XGA(1024x768)	XGA(1024x768)	SXGA(1280x1024)	SXGA(1280x1024)
Converted output signal	None	None	XGA	XGA
Resolution (Horizontal)	≥650 TV lines	≥650 TV lines	≥750 TV lines	≥750 TV lines
White balance	Auto/manual	Auto/manual	Auto/manual	Auto/manual
Color adjustment	Yes	Yes	Yes	Yes
Brightness adjustment	Yes	Yes	Yes	Yes
Image capture	Yes, 12 volatile images	Yes, 12 volatile images	Yes, 12 volatile images	Yes, 400 NON-volatile images
Video recording	Yes	Yes	Yes	Yes
Image mirror	Yes	Yes	Yes	Yes
Image rotation	180	No	No	90, 180, 270 (frozen)
Image split	Yes	Yes	Yes	Yes
Image freeze	Yes	Yes	Yes	Yes
Picture in picture	No	No	No	Yes
Title freeze	No	No	No	Yes
Text mode	No	Yes	Yes	Yes
Black and white/color conversion	Yes	Yes	Yes	Yes
Positive/negative conversion	Yes	Yes	Yes	Yes
OSD	Yes	Yes	Yes	Yes
<b>INPUT TERMINALS</b>				
VGA	None	x1	x1	x1
AUDIO	None	x1	x1	x1
<b>OUTPUT TERMINALS</b>				
DVI	None	None	None	x1
VGA	x1	x1	x1	x1
VIDEO	None	x1	x1	x1
AUDIO	None	x1	x1	x1
S-VIDEO	None	x1	x1	x1
<b>OTHER TERMINALS</b>				
USB2.0	Slavex(USB camera)	Slavex(USB camera)	Slavex(USB camera)	Hostx(Mouse, Memory stick) Slavex(USB camera/Build-in image download)
USB driver and software	Windows 2000/XP/Vista, Mac OS10.4 or above. Driver plug and play	Windows 2000/XP/Vista, Mac OS10.4 or above. Driver plug and play	Windows 2000/XP/Vista, Mac OS10.4 or above. Driver plug and play	Windows 2000/XP/Vista, Mac OS10.4 or above.
RS232(computer controllable)	x1	x1	x1	x1
Kensington lock	Yes	Yes	Yes	Yes
Remote control	Yes(360xontrollable)	Yes(360xontrollable)	Yes(360xontrollable)	Yes(360xontrollable)
Built-in LCD	None	None	None	Yes
Light source	Embedded LED lamp on arm	Embedded LED lamp on arm	Embedded LED lamp on arm	Embedded LED lamp on arm
Operating temperature	32°F to 104°F	32°F to 104°F	32°F to 104°F	32°F to 104°F
Dimensions	Folded:12.6"×6.6"×3.7" Setup:19.7"×6.6"×19.3"	Folded:12.6"×6.6"×3.7" Setup:19.7"×6.6"×19.3"	Folded:12.6"×6.6"×3.7" Setup:19.7"×6.6"×19.3"	Folded:12.6"×6.6"×3.7" Setup:19.7"×6.6"×19.3"
Power supply	12V DC power adapter	12V DC power adapter	12V DC power adapter	12V DC power adapter
Weight(net)	2.5Kg	2.5Kg	2.5Kg	2.5Kg



Wanin Visual Technologies Co., Ltd.

SOYEA Science and Technology Park,  
No.8 Road cross at No.5 Road, HEDA,  
Hangzhou 310018 China.

Tel: +86-571-58101234  
Fax: +86-571-58101236  
Email: waninglobal@gmail.com  
<http://en.wanin.net>



## DOCUMENT CAMERA PORTABLE SERIES



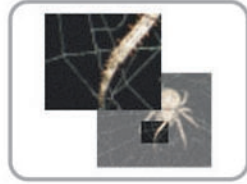
**vidifox** i3010/i3030/i3130/i3380

# vidifox i3010/i3030/i3130

XGA/SXGA resolution powered by 2 mdegapixel CMOS sensor



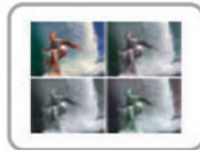
9x optical and 12x digital zoom and pan.



High speed auto focus and iris



Digital imaging feature suite (split, freeze, Mirror, B&W, Pos/Neg etc)



Plug and play USB2.0 image capture and video recording



Eco friendly LED body lighting



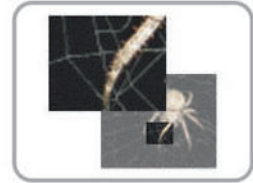
Ideal for presentations  
improve the efficiency



# vidifox i3380



SXGA resolution powered by 3 mdegapixel CMOS sensor



9x optical and 12x digital zoom and pan.



High speed auto focus and iris



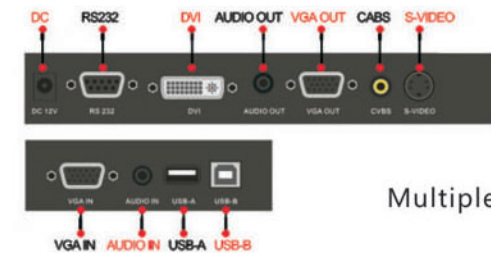
Title freeze



Picture in picture



400 images save on board with non-volatile memory



Multiple input/output terminals for flexible connectivity